



**SOUTHEASTERN
CONSULTING ENGINEERS, INC.**

CLIFFORD SIMS PARK IMPROVMENTS BID DRAWINGS (SITE PLAN)

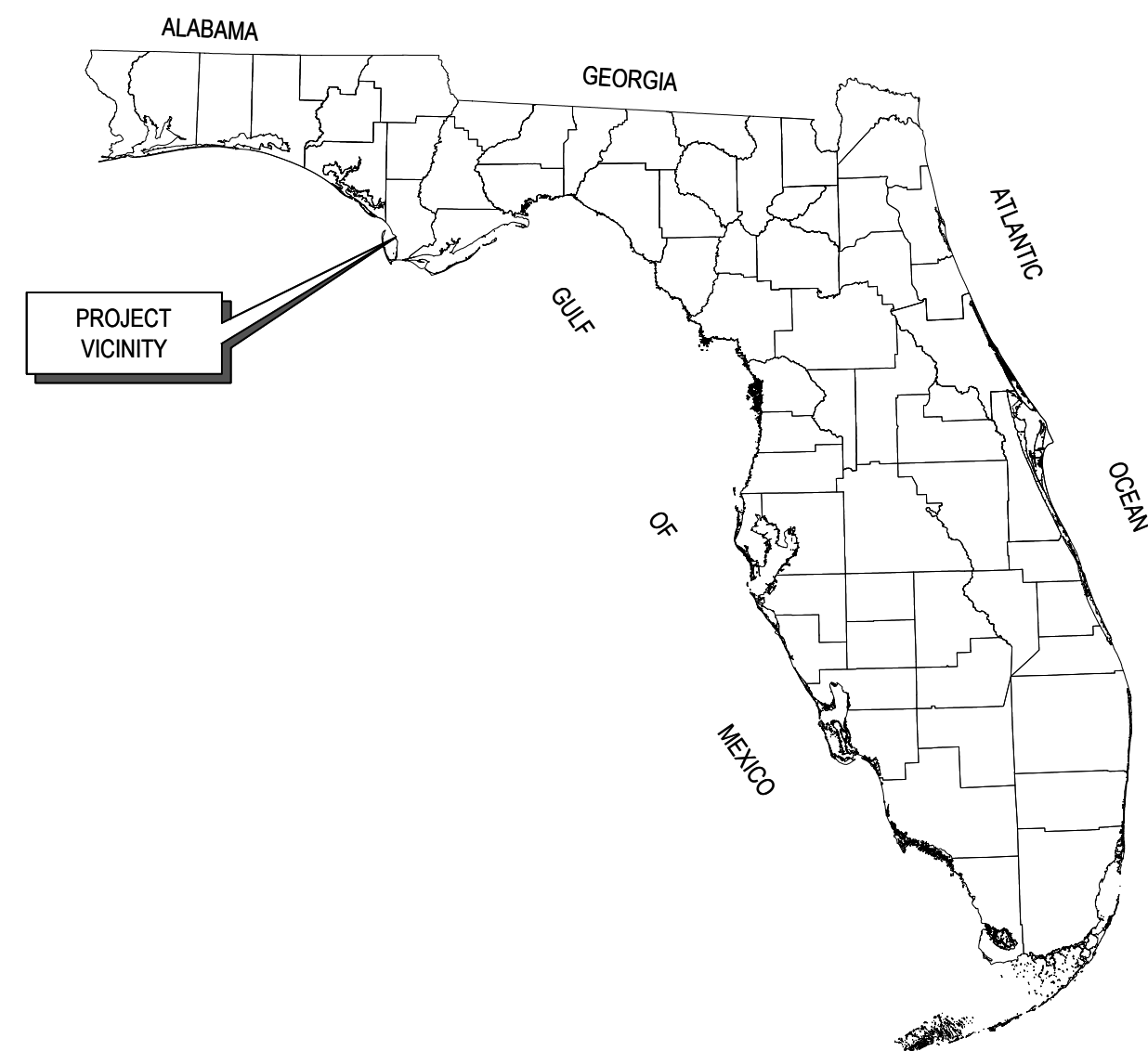
SECTION	2	TOWNSHIP	8S	RANGE	11W
---------	---	----------	----	-------	-----

CLIFFORD SIMS PARK
PORT ST. JOE, FLORIDA 32456
GULF COUNTY PARCEL ID: 04594-010R

FOR

CITY OF PORT SAINT JOE

PROJECT VICINITY



LOCATION MAP



SHEET INDEX

SHEET	SHEET NAME
C-00	COVER SHEET
C-01	PRE-MICHAEL AS-BUILT PLAN
C-02	DEMOLITION PLAN
C-03 - C-04	SITE PLAN

THESE PLANS ARE DESIGNED IN ACCORDANCE WITH:
- FDEP FLORIDA STORMWATER EROSION AND SEDIMENTATION CONTROL INSPECTORS MANUAL

THE ABOVE NAMED PROFESSIONAL ENGINEER SHALL BE RESPONSIBLE FOR THE SHEETS LISTED IN THE SHEET INDEX ABOVE IN ACCORDANCE WITH RULE 61615-23.004, F.A.C.

NOTE:
THE SCALE OF THESE PLANS MAY HAVE CHANGED DUE TO REPRODUCTION.



SEAL FLORIDA
PROFESSIONAL ENGINEER
S. LANCE WATSON, P.E.
LICENSE NUMBER 83335

COVER SHEET

CLIFFORD SIMS PARK IMPROVEMENTS
PORT ST. JOE, FLORIDA 32456
GULF COUNTY PARCEL ID: 04594-010R

PROJECT NUMBER: 21-167-04

REVISIONS:

DESIGNED BY:	DRAWN BY:	CHECKED BY:	DATE	BY	ITEM
L. WATSON	T. ADKISON	T. MARSH			

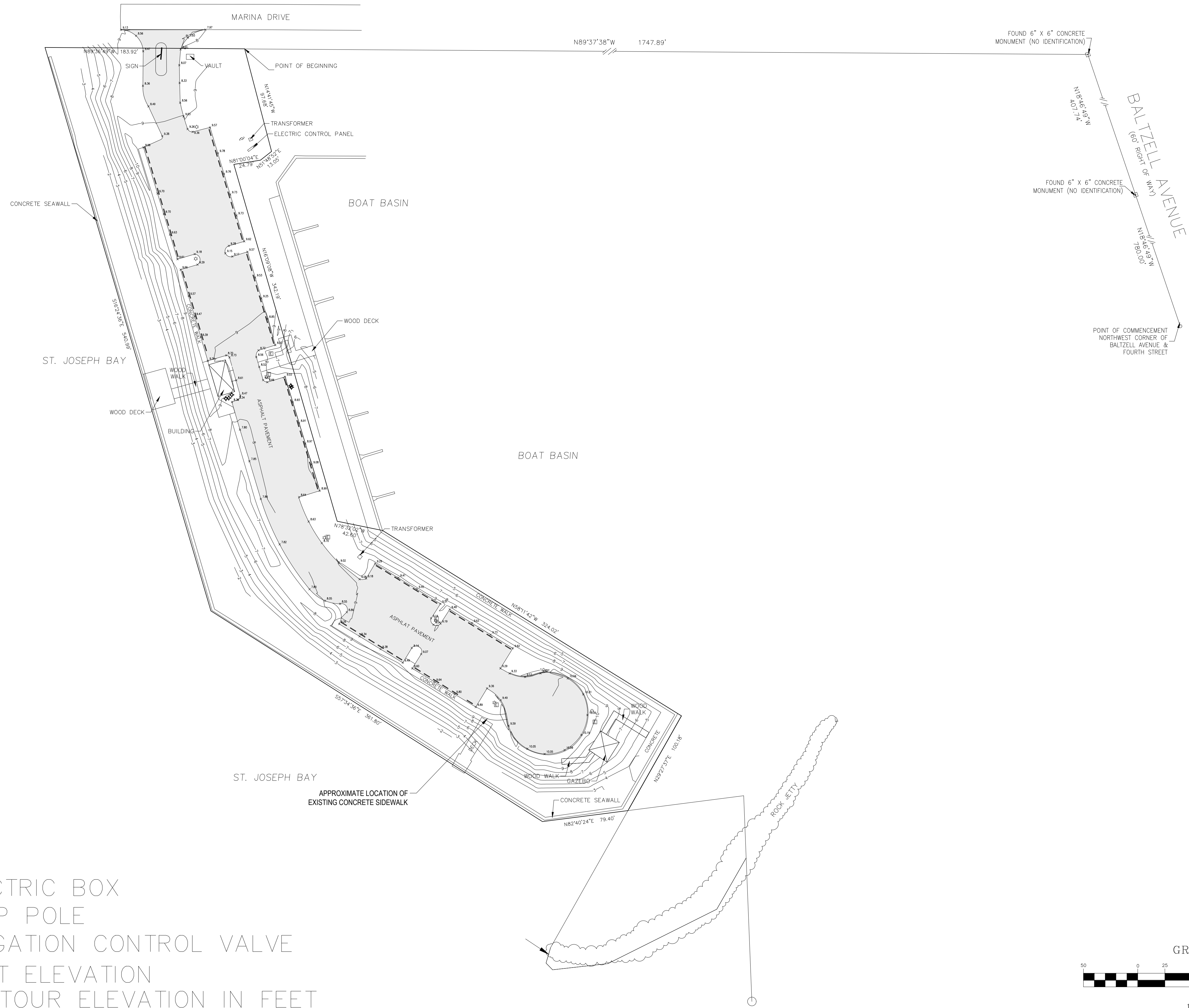
FOR: CITY OF PORT SAINT JOE
P.O. BOX 216
PORT ST. JOE, FLORIDA 32457

DATE: 11/17/21

SHEET NO.

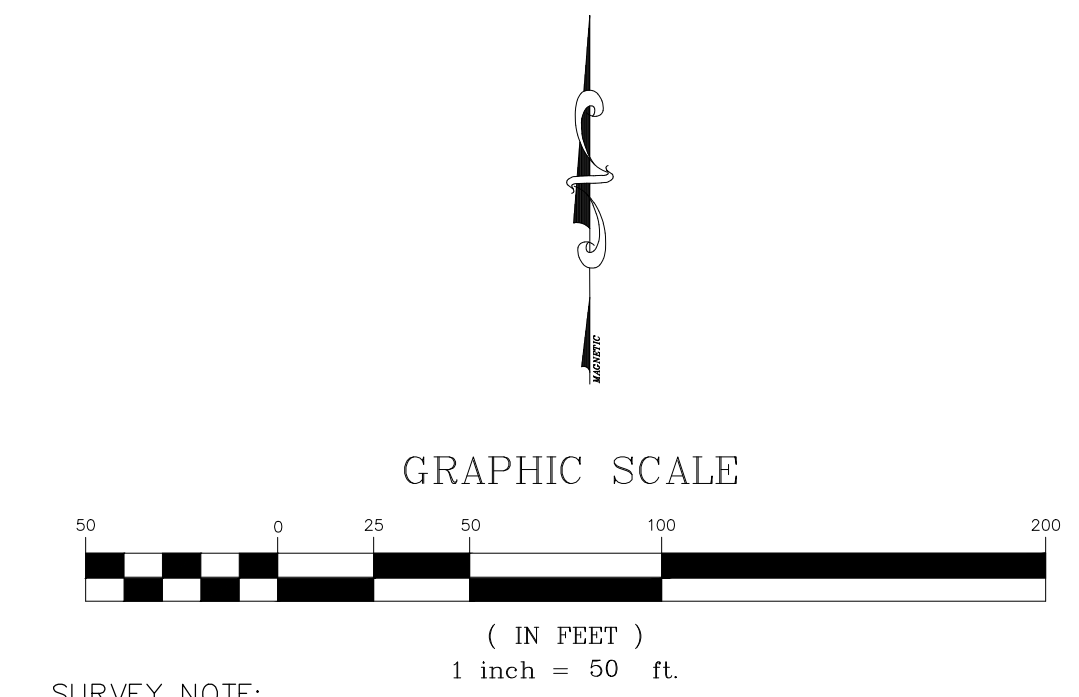
C-00

DATE: 1/11/2022 11:29 AM, FILE LOCATION: S:\0 - PROJECTS\0 - DWG\2021 JOBS\21-167-04 CLIFFORD SIMS PARK - JETTY PARK IMPROVEMENTS - STR/CIVIL DRAWINGS\DWGSHEET\CITY OF PSJ JETTY PARK DSGN1.DWG



LEGEND:

- = ELECTRIC BOX
- = LAMP POLE
- = IRRIGATION CONTROL VALVE
- = SPOT ELEVATION
- = CONTOUR ELEVATION IN FEET



SURVEY NOTE:
ELEVATIONS AND CONTOURS SHOWN HEREON ARE TRUE ELEVATIONS
BASED ON THE NORTH AMERICAN VERTICAL DATUM OF 1988.



SEAL FLORIDA
PROFESSIONAL ENGINEER
S. LANCE WATSON, P.E.
LICENSE NUMBER 83335

PRE-MICHAEL AS-BUILT PLAN
CLIFFORD SIMS PARK IMPROVEMENTS
PORT ST. JOE, FLORIDA 32456
GULF COUNTY PARCEL ID: 04594-010R

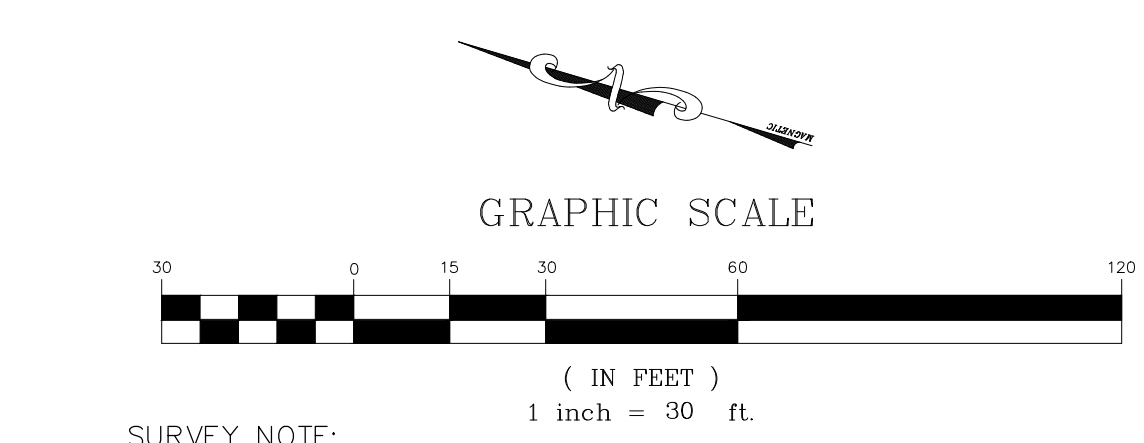
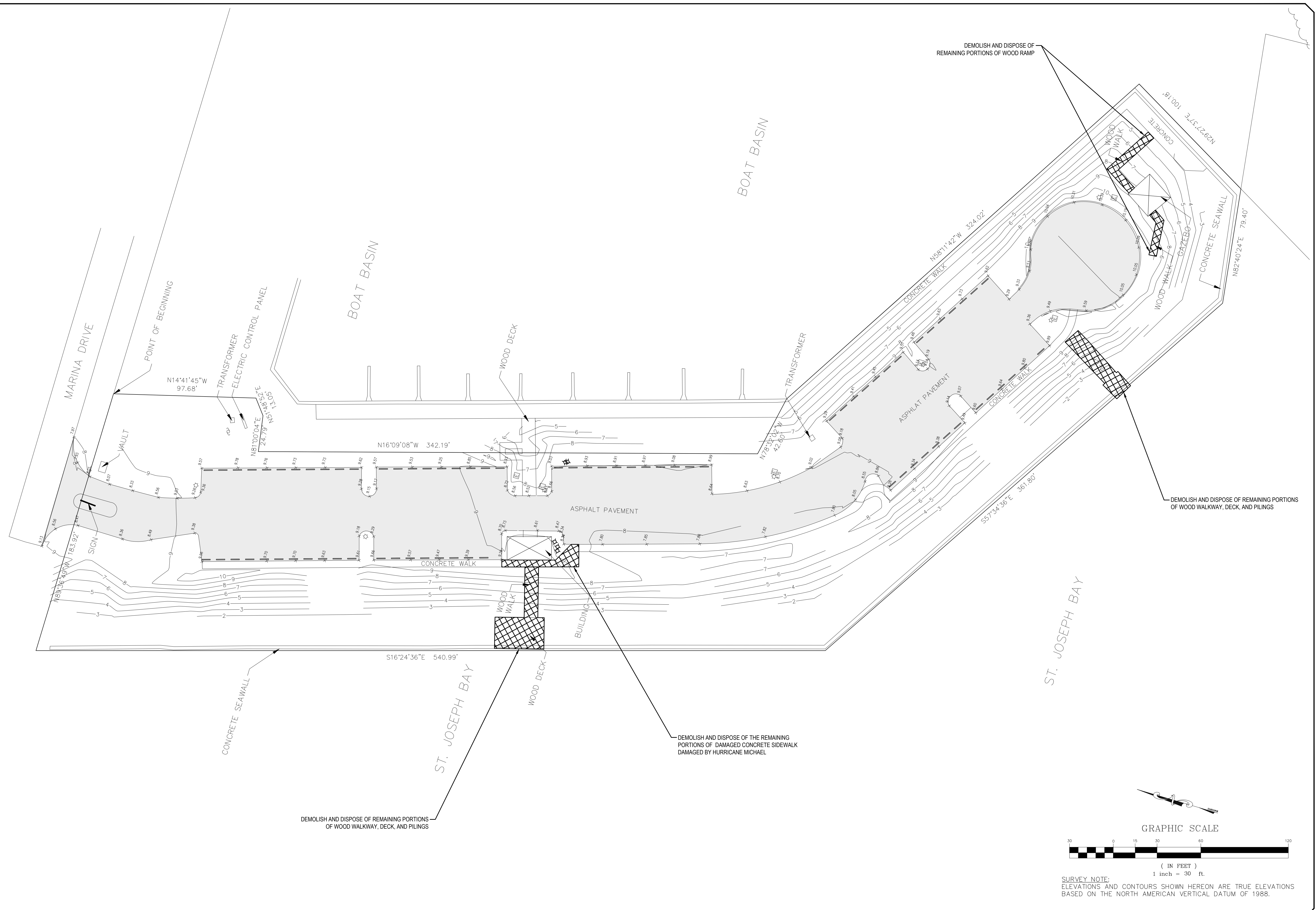
DESIGNED BY:	DRAWN BY:	CHECKED BY:	DATE:	BY:	ITEM:
L. WATSON	T. ADKISON	T. MARSH			

PROJECT NUMBER: 21-167-04 REVISIONS:

CITY OF PORT SAINT JOE
P.O. BOX 206
PORT ST. JOE, FLORIDA 32457

DATE: 1/11/2021
SHEET NO.
0-01

DATE: 1/11/2022 11:29 AM, FILE LOCATION: S:\D - PROJECTS\10 - DWG\2021 - PROJECTS\10 - DWG\2021 - DWG\21-167-04 CLIFFORD SIMS PARK - JETTY PARK IMPROVEMENTS - STR/CIVIL DRAWINGS\DWG\SHEETCITY OF PSJ JETTY PARK DSGN1.DWG



SURVEY NOTE:
ELEVATIONS AND CONTOURS SHOWN HEREON ARE TRUE ELEVATIONS
BASED ON THE NORTH AMERICAN VERTICAL DATUM OF 1988.



SEAL FLORIDA
PROFESSIONAL ENGINEER
S. LANCE WATSON, P.E.
LICENSE NUMBER 83335

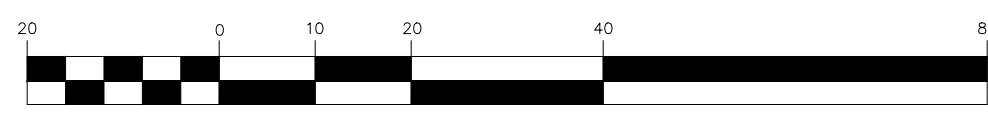
DEMOLITION PLAN

CLIFFORD SIMS PARK IMPROVEMENTS
PORT ST. JOE, FLORIDA 32456
GULF COUNTY PARCEL ID: 04594-010R

PROJECT NUMBER: 21-167-04		REVISIONS:			
DESIGNED BY:	DRAWN BY:	CHECKED BY:	DATE	BY	ITEM
L. WATSON	T. ADKISON	T. MARSH			
FOR: CITY OF PORT SAINT JOE P.O. BOX 216 PORT ST. JOE, FLORIDA 32457					
DATE: 1/11/21					
SHEET NO. 002					

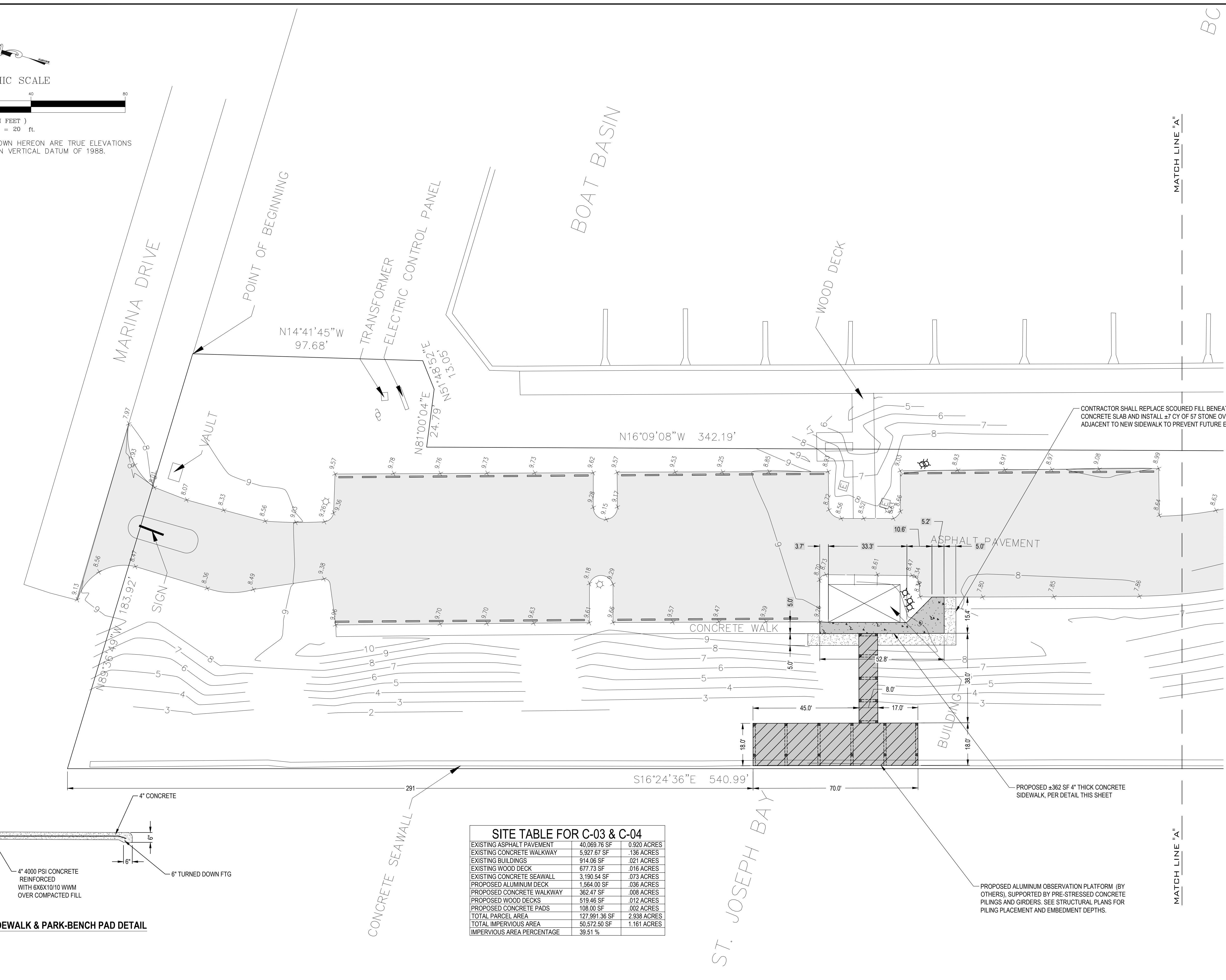
DATE: 1/11/2022 11:29 AM, FILE LOCATION: S:\D - PROJECTS\10 - DWG\2021 - PROJECTS\10-167-04 CLIFFORD SIMS PARK - JETTY PARK IMPROVEMENTS - STR/CIVIL DRAWINGS\DWGSHEETS\CITY OF PSJ JETTY PARK DSGN1.DWG

GRAPHIC SCALE



(IN FEET)
1 inch = 20 ft.

SURVEY NOTE:
ELEVATIONS AND CONTOURS SHOWN HEREON ARE TRUE ELEVATIONS
BASED ON THE NORTH AMERICAN VERTICAL DATUM OF 1988.

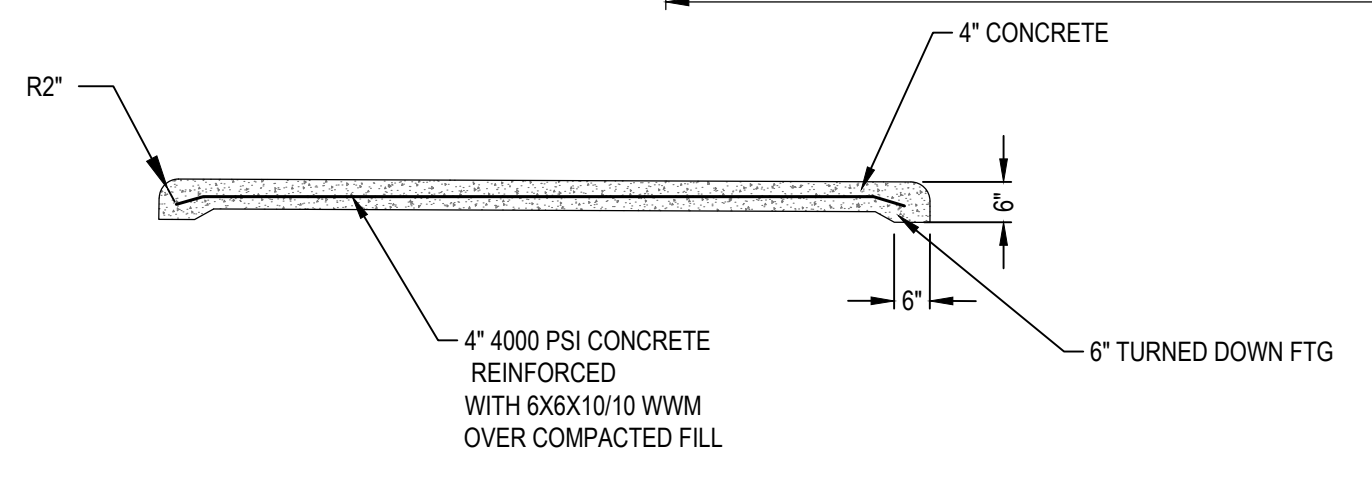


BC

MATCH LINE "A"

MATCH LINE "A"

ST. JOSEPH BAY



1 TYP. SIDEWALK & PARK-BENCH PAD DETAIL
C03 N.T.S.

SITE TABLE FOR C-03 & C-04

EXISTING ASPHALT PAVEMENT	40,069.76 SF	0.920 ACRES
EXISTING CONCRETE WALKWAY	5,927.67 SF	.136 ACRES
EXISTING BUILDINGS	914.06 SF	.021 ACRES
EXISTING WOOD DECK	677.73 SF	.016 ACRES
EXISTING CONCRETE SEAWALL	3,190.54 SF	.073 ACRES
PROPOSED ALUMINUM DECK	1,564.00 SF	.036 ACRES
PROPOSED CONCRETE WALKWAY	362.47 SF	.008 ACRES
PROPOSED WOOD DECKS	519.46 SF	.012 ACRES
PROPOSED CONCRETE PADS	108.00 SF	.002 ACRES
TOTAL PARCEL AREA	127,991.36 SF	2.938 ACRES
TOTAL IMPERVIOUS AREA	50,572.50 SF	1.161 ACRES
IMPERVIOUS AREA PERCENTAGE	39.51 %	

CONTRACTOR SHALL REPLACE SCOURED FILL BENEATH EXISTING CONCRETE SLAB AND INSTALL ±7 CY OF #7 STONE OVER FABRIC ADJACENT TO NEW SIDEWALK TO PREVENT FUTURE EROSION

PROPOSED ±362 SF 4" THICK CONCRETE SIDEWALK, PER DETAIL THIS SHEET

PROPOSED ALUMINUM OBSERVATION PLATFORM (BY OTHERS), SUPPORTED BY PRE-STRESSED CONCRETE PILING AND GIRDERS. SEE STRUCTURAL PLANS FOR PILING PLACEMENT AND EMBEDMENT DEPTHS.



SEAL FLORIDA
PROFESSIONAL ENGINEER
S. LANCE WATSON, P.E.
LICENSE NUMBER 83335

SITE PLAN

CLIFFORD SIMS PARK IMPROVEMENTS
PORT ST. JOE, FLORIDA 32456
GULF COUNTY PARCEL ID: 045944-010R

PROJECT NUMBER: 21-167-04 REVISIONS:

DESIGNED BY:	DRAWN BY:	CHECKED BY:	DATE	BY	ITEM
L. WATSON	T. ADKISON	T. MARSH			

FOR: CITY OF PORT SAINT JOE
PORT ST. JOE, BOX 206
PORT ST. JOE, FLORIDA 32457

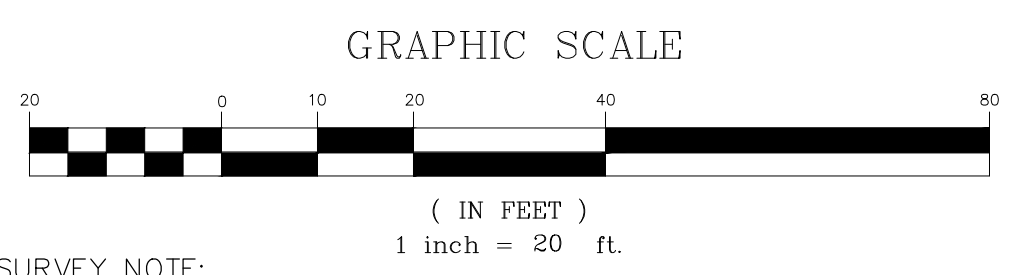
DATE: 1/11/2021
SHEET NO. 0103

SITE PLAN

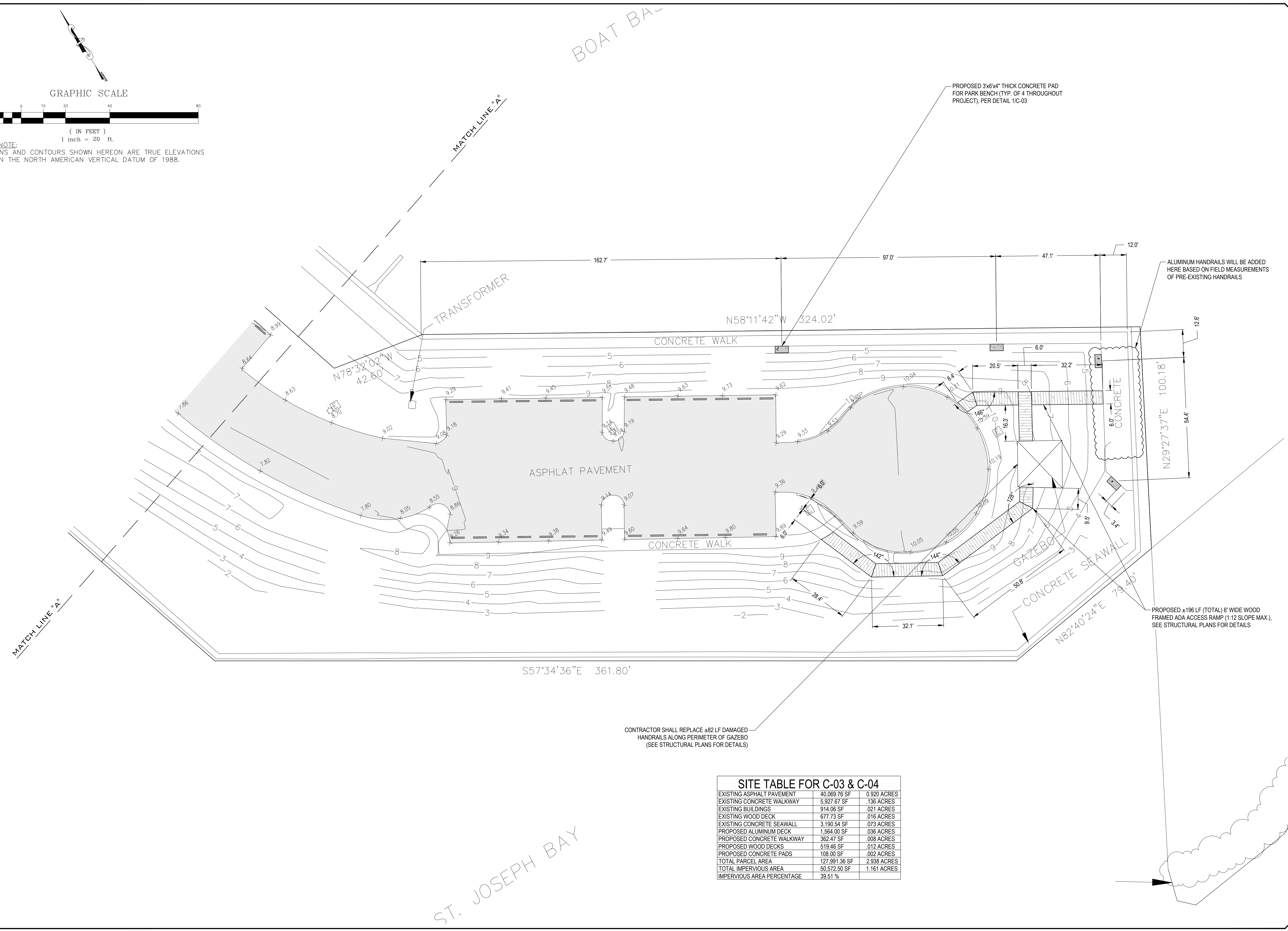
CLIFFORD SIMS PARK IMPROVEMENTS
 PORT ST. JOE, FLORIDA 32456
 GULF COUNTY PARCEL ID: 045944-010R

PROJECT NUMBER:	21-167-04	REVISIONS:	DATE	BY	ITEM
DESIGNED BY:	L. WATSON	CHECKED BY:	T. ADKISON	T. MARSH	
FOR CITY OF PORT SAINT JOE P.O. BOX 226 PORT ST. JOE, FLORIDA 32457					

DATE: 1/11/2022 11:29 AM, FILE LOCATION: S:\0 - PROJECTS\0 - DWG\2021 - PROJECTS\1-167-04 CLIFFORD SIMS PARK - JETTY PARK IMPROVEMENTS - STR/CIVIL DRAWINGS\DWG\SHEET\CITY OF PSJ JETTY PARK DSGN1.DWG



SURVEY NOTE:
 ELEVATIONS AND CONTOURS SHOWN HEREON ARE TRUE ELEVATIONS
 BASED ON THE NORTH AMERICAN VERTICAL DATUM OF 1988.



SITE TABLE FOR C-03 & C-04

EXISTING ASPHALT PAVEMENT	40,069.76 SF	0.920 ACRES
EXISTING CONCRETE WALKWAY	5,927.67 SF	.136 ACRES
EXISTING BUILDINGS	914.06 SF	.021 ACRES
EXISTING WOOD DECK	677.73 SF	.016 ACRES
EXISTING CONCRETE SEAWALL	3,190.54 SF	.073 ACRES
PROPOSED ALUMINUM DECK	1,584.00 SF	.036 ACRES
PROPOSED CONCRETE WALKWAY	362.47 SF	.008 ACRES
PROPOSED WOOD DECKS	519.46 SF	.012 ACRES
PROPOSED CONCRETE PADS	108.00 SF	.002 ACRES
TOTAL PARCEL AREA	127,981.36 SF	2.938 ACRES
TOTAL IMPERVIOUS AREA	50,572.50 SF	1.161 ACRES
IMPERVIOUS AREA PERCENTAGE	39.51 %	